

Travel Pocket Guide

9 – 11 October 2021

National Exhibition and Convention Center (Shanghai), China



Content

Page

03

Show Information



Page

12

Official Carrier
& Partner Airlines



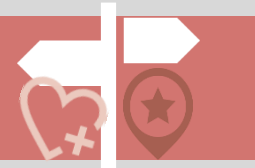
04

Visa Invitation Letter



13

Attractions



05

Transportation to Venue



15

Useful Phrases



07

Official Hotel List
& Travel Agent



16

Useful Information





9 – 11 October 2021

Show Name Intertextile Shanghai Home Textiles – Autumn Edition 2021
2021 中国国际家用纺织品及辅料 (秋冬) 博览会

Website <https://intertextile-shanghai-hometextiles-autumn.hk.messefrankfurt.com/shanghai/en.html>

Venue National Exhibition and Convention Center (Shanghai) – NECC (SH)
Tel: +86 21 6700 8888
Fax: +86 21 6700 8877
West Entrance: 1888 Zhuguang Road, Shanghai, China
(connected with Metro Line 2 exit)
South Entrance: 168 Yinggang East Road, Shanghai, China
North Entrance: 333 Songze Avenue Road, Shanghai, China

国家会展中心(上海)
总机: +86 21 6700 8888
传真: +86 21 6700 8877
西门: 中国上海诸光路1888号
南门: 中国上海盈港东路168号
北门: 中国上海崧泽大道333号

Opening Hours

| | |
|--------------------------|-----------------|
| 9 August 2021 (Saturday) | 9:00am – 6:00pm |
| 10 August 2021 (Sunday) | 9:00am – 6:00pm |
| 11 August 2021 (Monday) | 9:00am – 6:00pm |

Free of charge for trade visitors only.
Persons under 18 will not be admitted.

All foreign exhibitors and visitors to PR China must apply for visa and comply with the health requirement on entering into China. Please ensure that all your colleagues and accompanies have already obtained the relevant visa prior to departure.

Due to the current situation arising from the spread of COVID-19, Chinese government has temporarily closed the Chinese Visa Application Service Centers and suspended the entry into China by foreign nationals holding visas or residence permits until further notice. Nowadays Chinese embassies have published some updated details of visa applications on the official websites in certain countries about relaxing the restrictions of visa application. Therefore, we suggest you contact your local Chinese embassies first when you plan to apply a Chinese visa, and to recognize if you can make the application along with what documents required. Please notice that the visa application policy may change along with the epidemic situation, and all the information and policies are subjected to the updates which released by the local Chinese embassies when you applying for a visa at that time. All the person travelling from overseas to Shanghai must be subject to 14-day quarantine for medical observation.

Visitor

Please contact our official travel agency for more details and cost for visa invitation letter:

Official Travel Agent:
Shanghai Vision Expo & Meeting Solutions Co., Ltd.
Contact person: Ms. Ealcie Gao
Tel: 86 (21) 5481 6051 / 5481 6052* 808
Fax: 86 (21) 5481 6032
Email: invitation@shanghai-vision.com
Address: Unit 703, New Caohejing Building, 509 Caobao Road, Shanghai 200233, China

Exhibitor

Please contact the organiser for more information of the visa invitation letter



Transportation to Venue

Air

From the Hongqiao Airport (Terminal 2)

--- Approximately 5 km

Taxi: About 15 minutes

Metro: Take Line 2 and get off at Xujingdong/ East Xujing Metro Station (徐泾东站)

From Pudong International Airport

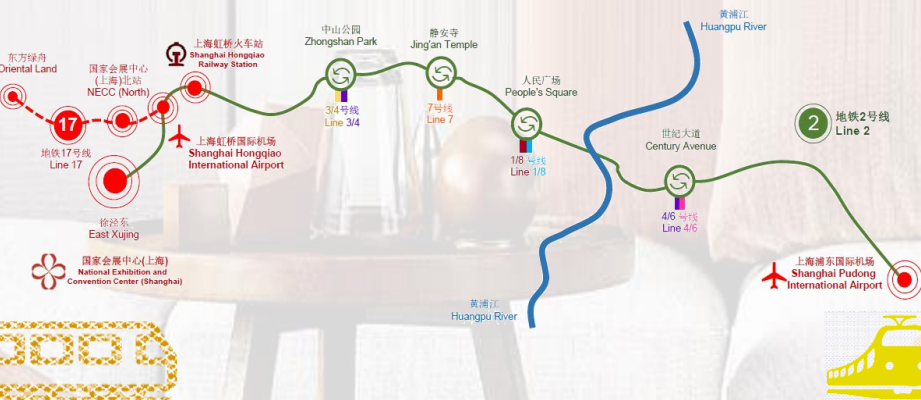
--- Approximately 60 km

Taxi: About 90 minutes

Metro: Take Line 2 and get off at Xujingdong/ East Xujing Metro Station (徐泾东站)

Metro

Take Line 2 and get off at Xujingdong/Xujing East Station (徐泾东站)



Railway

From Shanghai Hongqiao Railway Station

--- Approximately 3 km

Metro: Take Line 2 and get off at Xujingdong/East Xujing Metro Station (徐泾东站)

From Shanghai Railway Station

--- Approximately 25 km

Metro: Take Line 1 to Renminguangchang/People's Square Station (人民广场), change to Line 2 and get off at Xujingdong/East Xujing Metro Station (徐泾东站)

From Shanghai South Railway Station

--- Approximately 23 km

Metro: Take Line 1 to Renminguangchang/People's Square Station (人民广场), change to Line 2 and get off at Xujingdong/East Xujing Metro Station (徐泾东站)

Taxi

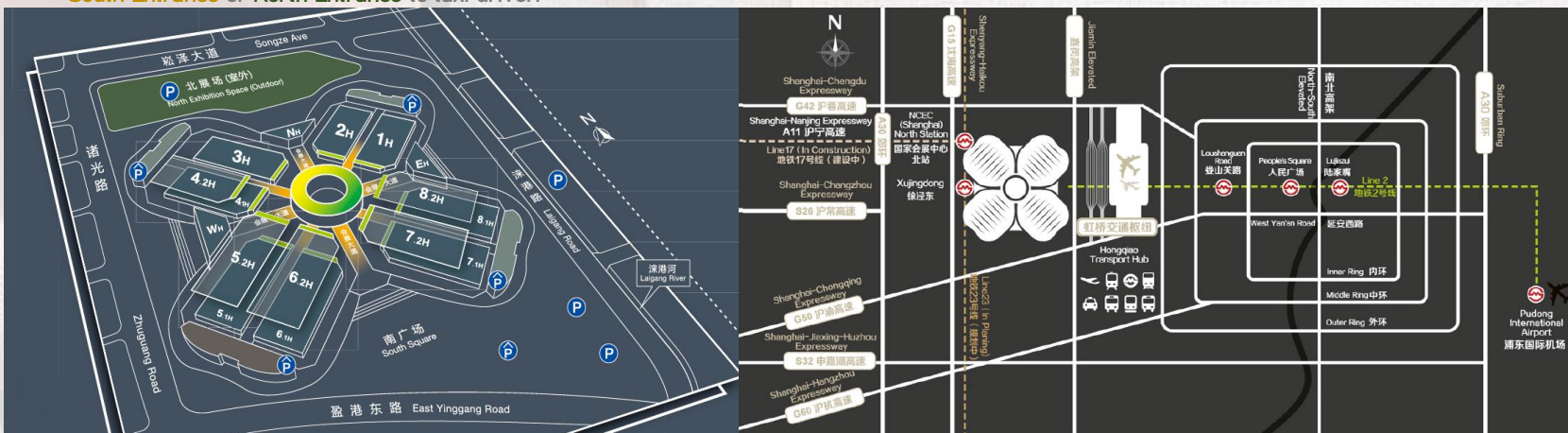
Please show the Chinese address of venue's **South Entrance** or **North Entrance** to taxi driver:

South Entrance:

请带我去:
国家会展中心(上海)南门
中国上海盈港东路168号

North Entrance:

请带我去:
国家会展中心(上海)北门
中国上海崧泽大道333号





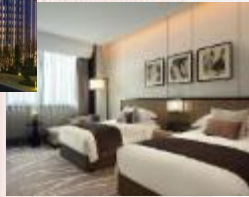
Official Hotel List

1. InterContinental Shanghai NECC



Located in the heart of Shanghai Hongqiao CBD, the hotel is the only luxury hotel in the dazzling National Exhibition and Convention Center (Shanghai). The hotel is just 8 kilometers from Hongqiao International Airport and adjacent to the Hongqiao transportation hub. It is also just steps away from Metro Line 2, which is connecting guests to all of Shanghai's commercial districts. The hotel features 536 contemporary guestrooms, four eclectic restaurants and lounges, a luxury spa and an indoor pool.

📍 1700 Zhuguang Road, Shanghai
Distance to NECC: 5 mins on walk
Drive distance to Pudong Int'l Airport: 60 mins
Drive distance to Hongqiao Int'l Airport: 25 mins

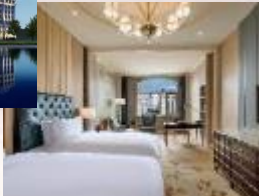


2. Sofitel Shanghai Hongqiao



Located just minutes from the NECC convention center and 5 minutes from the Hongqiao transport hub, Sofitel Shanghai Hongqiao is a Parisian inspired inner city oasis featuring 354 opulent guest rooms and suites with our signature Sofitel MyBed. An exciting gastronomy experience awaits with our 3 restaurants and 2 bars. Rejuvenate in our SoSPA, work up a sweat at SoFIT wellness center or have a meeting in one of our modern function rooms.

📍 666 Taihong Road, Shanghai
Distance to NECC: 7 mins by taxi
Drive distance to Pudong Int'l Airport: 60 mins
Drive distance to Hongqiao Int'l Airport: 10 mins



3. Crowne Plaza Shanghai Hongqiao



Crowne Plaza Shanghai Hongqiao is located at the heart of Hongqiao CBD that is the business hotel brand for modern business travelers. Hotel is 1 km away from the National Exhibition and Convention Center by straight-line distance, next to Shanghai Hongqiao International Airport and Shanghai Hongqiao Railway Station. The hotel is within walking distance from Hongqiao shopping mall and metro line 2/10/17. The hotel has 330 stylishly designed guest rooms, all with well-equipped facilities. Guests can relax and enjoy life or be productive at work.

📍 No. 1-3 Lane 630 Shenchang Road Shanghai
Distance to NECC: 10 mins by taxi
Drive distance to Pudong Int'l Airport: 60 mins
Drive distance to Hongqiao Int'l Airport: 10 mins



4. Renaissance Yangtze Shanghai Hotel



Located in the heart of Hongqiao, an upscale business district, it is your home away from home. For meetings and conferences, the hotel offers 22 stylish function rooms, all equipped with the latest meeting solutions technology including a Grand Ballroom. Be it for business or pleasure, the hotel offers an impressive array of first-class facilities and inventive catering solutions. With 5 award-winning restaurants and 2 lounges, indulge yourself with gastronomic temptations ranging from classical Chinese cuisine to modern Western fusion.

📍 2099 Yan'an Xi Road, Shanghai
Distance to NECC: 35 mins by taxi
Drive distance to Pudong Int'l Airport: 60 mins
Drive distance to Hongqiao Int'l Airport: 30 mins



5. Courtyard by Marriott Hongqiao



Located in the west side of Hongqiao CBD, it is situated adjacent to the NECC in short distance, hotel shuttle service is available to exhibition guests. For public transportation, East Xujing Station, terminus station for Metro Line 2 is nearby, linking visitors directly to People's Square, Lujiazui Financial District, as well as Pudong International Airport. With so much easy access to the rest of the country and the world, it is safe to say Hongqiao has the potential to blossom into a world-class business center.

📍 333 Panwen Road, Shanghai
Distance to NECC: 5 mins by taxi
Drive distance to Pudong Int'l Airport: 60 mins
Drive distance to Hongqiao Int'l Airport: 25 mins



6. Hyatt Place Shanghai Hongqiao CBD



Located in the heart of Shanghai Hongqiao CBD with just steps away from NECC(Shanghai) and Hongqiao Transportation Hub combining Hongqiao Int'l Airport, High-speed railways, Metro Line 2 and 10, ground buses and taxis. It provides 252 ultramodern guest rooms with ideal accommodations for anyone visiting Shanghai, whether it is for business or leisure. It's a perfect place to host your executive meetings, family parties, event dinners and more, features your choice of residential-like suite or spacious studio hotel rooms, which are ideal for busy professionals, project teams and family travelers who don't want to sacrifice the comforts of home.

📍 9 Shenhong road, Shanghai
Distance to NECC: 7 mins by taxi
Drive distance to Pudong Int'l Airport: 70 mins
Drive distance to Hongqiao Int'l Airport: 15 mins





7. Wyndham Shanghai Hongqiao



Located just opposite to Hongqiao Int'l Airport Terminal 2. Offer a range of rooms which furnished and designed in a classy, yet modern fashion, including free Wi-Fi and free continental breakfast. Onsite restaurants serve Western and Asian dishes, which specializes in Cantonese cuisine and seafood dishes and respective cuisine. When guests want to take a break from their busy schedule, they can take advantage of the gym for a little exercise or go to the spa or salon to be pampered.

1989 Huaxiang Road, Shanghai

Distance to NECC: 10 mins by taxi

Drive distance to Pudong Int'l Airport: 70 mins

Drive distance to Hongqiao Int'l Airport: 10 mins

8. Grand Mercure Hongqiao Shanghai



Located in the center of Shanghai's western Hongqiao District, in between stations of Metro Lines 2 and 10. Guestrooms offer microwaves, satellite flatscreen TVs, minibars and inroom safes, also come with fully-equipped kitchens or kitchenettes as well as balconies. Guest could find Cantonese cuisine, international cuisine, French fusion and a hand-picked selection of wines, cocktails and seasonal drink in the hotel. A fitness center, massage center and sauna are also available for guests looking to unwind.

369 Xianxia Road, Shanghai

Distance to NECC: 35 mins by taxi

Drive distance to Pudong Int'l Airport: 60 mins

Drive distance to Hongqiao Int'l Airport: 30 mins

9. Golden Tulip Shanghai Rainbow



"PLAYTIME ANYTIME" featuring here a new brand positioning delivering the concept of playful outlook on life, work and travel enriched by local culture. Located in the business hub of Hongqiao Development zone, adjacent to the International Trade Center & Shanghai Mart, close to the inner express way and Yan'an road express way. There are several traffic main roads and subway No.3/4 are nearby. Many business office buildings, shopping centers, restaurants and entertainments are located in the area. This contemporary new look hotel is set in a 30-floor

No.2000 Yan'an West Road hanghai

Distance to NECC: 35 mins by taxi

Drive distance to Pudong Int'l Airport: 60 mins

Drive distance to Hongqiao Int'l Airport: 30 mins



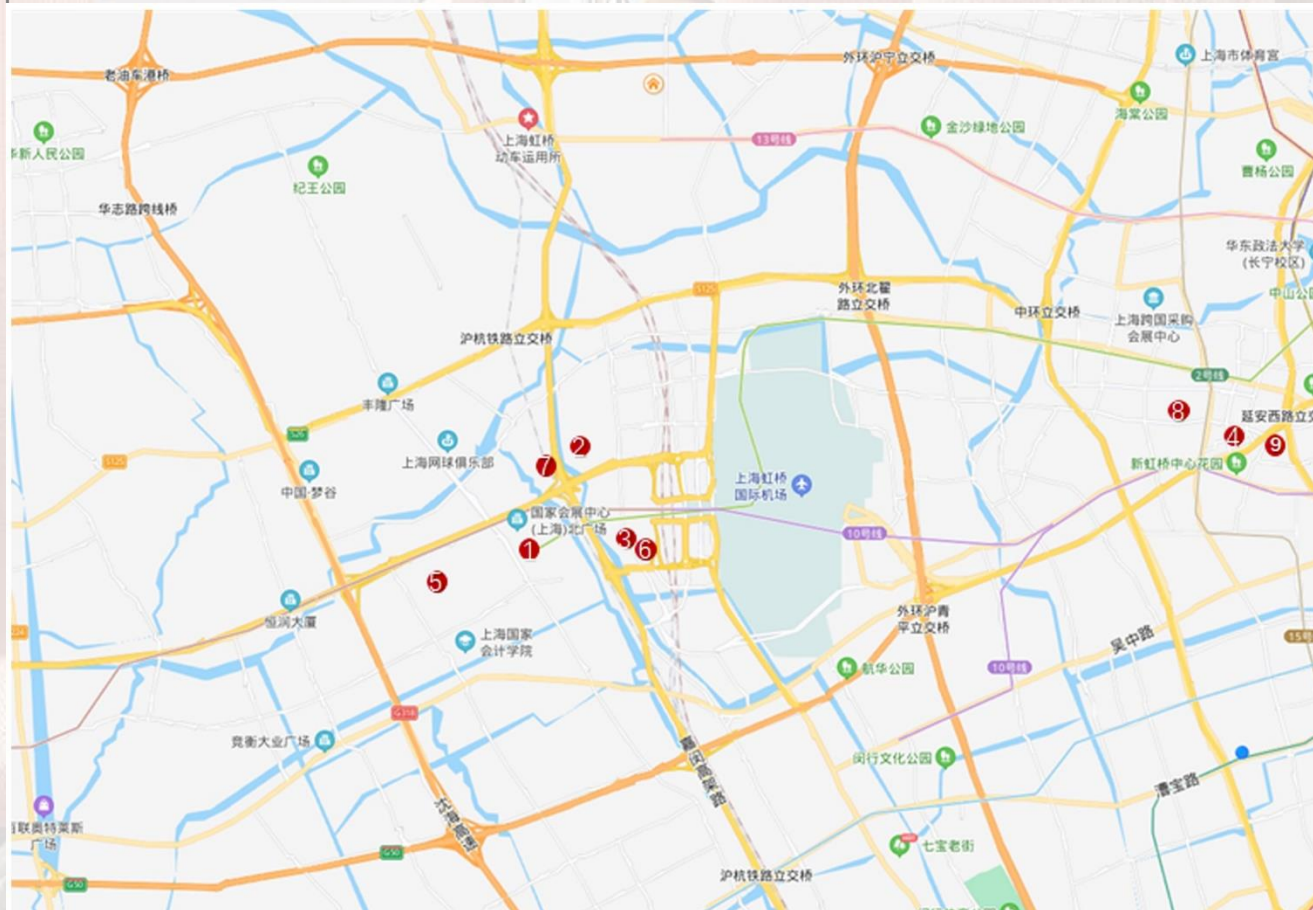
Official Travel Agent

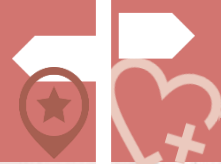
Official Travel Agent: Shanghai Vision Expo & Meeting Solutions Co Ltd
Contact person: Ms. Jenny Zhang / Mr. Paul Hou
Tel.: 86 (21) 5481 6051 / 5481 6052
Fax: 86 (21) 5481 6032
Email: jenny@shanghai-vision.com / paul.hou@shanghai-vision.com

* You may contact the official travel agent for reservation at special rate, or click [HERE](#) for more information.

* Please refer to below map for the location of 10 official hotels.

Hotel Location Map





Attractions

The Bund 上海外滩



Zhongshan East 1st Road, Huangpu Qu

A symbol of Shanghai and an epitome of Shanghai's modern history. On one side of the broad highway stand 52 blocks of tall, magnificent buildings with different architectural styles, which can be called a museum of modern world architecture. On the other side is the wide embankment, where crowds of visitors come to enjoy the beautiful scenery on the Huangpu – mother river of Shanghai. When night falls, colorful lights illuminate the whole bund area and turn it into a scene of the "wonderland".

Huangpu River Cruise Dock 黄浦江游览



Headstreams from Dianshan Lake, Zhujiajiao Town, Qingpu District,

The River cruise is an important traditional tourist item in Shanghai. The Huangpu River is the mother river of Shanghai. It symbolizes Shanghai and presents visitors with the cream of the city's scenic sights on its banks. Here you will have a glimpse of Shanghai's past and look into the bright future of the city. Starting from the Bund the boat will bring you upstream to Nanpu Bridge, turn around downstream to the Yangpu Bridge and all the way to Wusong Mouth, where the river meets the Yangze River, and then turns back. The cruise company owns different kinds of cruise ships, wharves and a waiting lounge, offers boat trips to tourists.

Nanjing Road Pedestrian Walkway 南京街



Nanjing East Road, Huangpu District

Nanjing Rd, famed as "No.1 Street in China", is an epitome of Shanghai's history and culture. The 1,033m long Pedestrian Street lies between the Bund and the People's Square. There are 600 shops on both sides of the walkways, the 100-year old ones, famous-brand ones, specialty shops of different trades. It is a most complete display of the varieties and brands of commodities in China, even in Southeast Asia, meeting the needs of different strata of consumers.

Laowai Street 老外街



Lane 3338, Hongmei Road

Hongmei Pedestrian Street has recently been re-named Laowaijie 101 (Foreigner's Street 101). Laowai, a commonly used term for foreigners in China, bringing the message that "Shanghaiese people are open to laowai. We love the laowai in Shanghai, and it's a more brotherly way of calling people from abroad." Laowai Street with a total length of more than 400 meters and is one of Shanghai's most popular hubs for Western and international cuisine. It is a car-free street of bars and restaurants where you can enjoy cuisine from Italy, Germany, France, Thailand, India and a dozen other nations, providing different kinds of food and ambiance suitable for a romantic dinner or spending a lazy Sunday afternoon. The street will also invite international bands and performers to dance and play instruments on the street from time to time.

Shanghai Disneyland Resort 上海迪士尼乐园



Huangzhao Rd, Chuanshaxinzen, Pudong New Area

Shanghai Disney Resort, the first Disney resort in Mainland China. The resort is home to the Shanghai Disneyland theme park, featuring seven lands, as well as two themed hotels – Shanghai Disneyland Hotel and Toy Story Hotel, Disneytown, a large shopping, dining and entertainment district, a Broadway-style theatre, Wishing Star Park and other outdoor recreation areas. Shanghai Disneyland is a Magic Kingdom-style theme park featuring classic Disney storytelling and characters but with authentic cultural touches and themes tailored specifically for the people of China. Shanghai Disney Resort offers something for everyone – thrilling adventures, lush gardens where guests can relax together, and enriching interactive experiences, all with the world-class guest service that Disney is known for around the globe.

Yuyuan Old Street 豫园老街



Houjia Road, Fangbang Middle Road, Huangpu District

Yuyuan area is a must for all tourists in the country and from abroad. It still maintains the antique style of street of ancient Chinese towns, shops stand in rows with a large collection of beautiful commodities of a great variety, large numbers of visitors crowd the place. It is a commercial center combining shopping, touring, catering and entertainment in one. The buildings look antique in the exterior and are modernized in the interior, harmonized with the entire picture of the ancient town. There is a large collection of snack shops in the area, supplying different kinds of refreshment that can please customers' palate, much to their hearts' content. Besides, here, visitors can also get different native and special products and souvenirs. It is, therefore, a tourist area much appreciated by visitors from home and abroad.

Useful Phrases



| English | Chinese | Putonghua |
|--|------------|--|
| General | | |
| How are you? | 你好吗? | nǐ hǎo ma? |
| Good morning | 早安 | zǎo ān |
| Good afternoon | 午安 | wǔ ān |
| Good night | 晚安 | wǎn ān |
| Thank you | 谢谢 | xiè xie |
| Yes / No | 是 / 不是 | shì / bú shì |
| National Exhibition and Convention Center (Shanghai) | 国家会展中心(上海) | guó jiā huì zhǎn zhōng xīn (shàng hǎi) |
| Take taxi | 打的 | dǎ dī |
| Bus | 公车 | gōng chē |
| Metro | 地铁 | dì tiě |
| Ferry | 船 | Chuán |
| How much is it? | 多少钱 | duō shǎo qián |
| Cheaper | 便宜一点 | pián yi yī diǎn |
| Toilet | 洗手间 | xǐ shǒu jiān |
| Restaurant | | |
| Order, please | 点菜 | diǎn cài |
| Menu | 菜单 | cài dān |
| Check, please | 请结帐 | qǐng jié zhàng |
| Receipt, please | 请给收据 | qǐng gěi shōu jù |
| Water | 水 | shuǐ |
| Tea | 茶 | chá |
| Coffee | 咖啡 | kā fēi |
| Milk | 牛奶 | niú nǎi |
| Cream | 奶油 | nǎi yóu |
| Sugar | 糖 | táng |
| Salt | 盐 | yán |
| Pepper | 胡椒粉 | hú jiāo fěn |
| Bread | 面包 | miàn bāo |
| Soup | 汤 | tāng |
| Vegetable | 菜 | cài |
| Seafood | 海鲜 | hǎi xiān |
| Beef | 牛肉 | niú ròu |
| Chicken | 鸡肉 | jī ròu |
| Pork | 猪肉 | zhū ròu |
| Vegetarian | 素菜 | sù cài |
| Potato | 土豆 | tǔ dòu |
| Rice | 米饭 | mǐ fàn |
| Noodles | 面条 | miàn tiáo |
| Sweet | 甜 | tián |
| Sour | 酸 | suān |
| Bitter | 苦 | kǔ |
| Spicy | 辣 | là |

Useful Information



Website

Intertextile Shanghai Home Textiles

<http://www.intertextilehome.com/>

Venue – NECC(SH) Website

<http://www.neccsh.com/cecsh/?lang=en>

Shanghai Metro

service.shmetro.com/en

Shanghai attractions

www.travelchinaguide.com/cityguides/shanghai.htm

Shanghai restaurants

<https://en.tripadvisor.com.hk/Restaurants-g308272-Shanghai.html>

Tel

Police

110

First-aid

120

Fire Ambulance

119

Traffic Accidents

122

Post Code Information

184

Weather Forecast

12121

Civil Aviation Inquiry

96990

Shanghai Tourist Hotline

962020

Phone Directory

114

Comprehensive Information

12580 / 118114

Railway Information

12306

Contact

Messe Frankfurt (HK) Ltd

35/F, China Resources Building

26 Harbour Road, Wanchai, Hong Kong

Tel : +852 2802 7728

Fax : +852 2598 8771

Email : hometextile@hongkong.messefrankfurt.com

See you in Shanghai!

